



Doctorate (PhD) in Epidemiology and Biostatistics

(Clinical and Global Health Bioethics)

EUCLID: an intergovernmental
treaty-based organization
under public international law

www.euclid.int



Program Overview



The EUCLID DEPI is a highly specialized and practical doctoral program that is primarily designed for active civil servants and governmental officials. It is not “US” or “EU” or “UK” or “China” centric but rather reflect a truly global and intergovernmental vision.

This online-delivered program aims at “preparing expert leaders for international civil service and global careers.”



In this Brochure, you will find:

- ◆ A word from the Secretary-General
- ◆ Program Overview
- ◆ Program Objectives
- ◆ Admission Requirements
- ◆ Methodology
- ◆ Program Courses
- ◆ Credit Values
- ◆ Accreditation
- ◆ Peers and Alumni
- ◆ Language Requirements
- ◆ How to Apply
- ◆ Summary and Outcome

What you need to know:

- ◆ This is an online (distance-learning) program with no residency requirements.
- ◆ Enrollment is continuous and asynchronous, which means that approved applicants may start at any time.
- ◆ By order of priority, eligible applicants are: (1) officials of the EUCLID Participating States (2) officials working for other States (3) staff of international organizations (4) ECOWAS region general public students (5) general public students from the rest of the world.
- ◆ This a low-tuition program with scholarship opportunities, offered by an intergovernmental (non-profit, public) organization under treaty authority.
- ◆ As an intergovernmental institution registered with the United Nations, EUCLID has headquartered in Bangui and Banjul but also maintains international liaison offices in many cities.

A message from the EUCLID Secretary-General

Joint Success...

EUCLID is a rare and remarkable institution in today's world, and we expect you—our potential future student and stakeholder—to be equally rare and outstanding.

We expect you to be persistent, determined to overcome all obstacles to achieve your personal and professional goals.

You should be passionate about your proposed field of study, an avid and fast reader whose aim is to achieve depth of understanding, excellence and quality as a professional and subject-matter expert.

You should be willing (and able) to absorb a vast amount of knowledge and to acquire critical skills in peripheral areas such as IT, marketing and public speaking.

EUCLID has built a bridge that reminds us of the amazing Millau Viaduct in France. This bridge was inaugurated in 2004 and represents a tremendous human achievement. EUCLID, likewise, was launched in 2004 and is now one of the world's few intergovernmental universities with a UN-registered treaty-based charter. Other similar institutions include the United Nations University, the European University Institute, the University of Central Asia and the University for Peace.

From being a mere vision in 2004 to becoming a respected international actor ten years later, we know that the road to achievement requires absolute dedication, an ever-renewed commitment to outstanding service and impeccable moral character.

In short, we seek students who will blend with EUCLID and become life-long stakeholders in our joint success.

Global Issues, Global Education...

We are an international intergovernmental organization, focused on sustainable economic development and global engagement. Are you?

If news headlines are dominated by institutions that stand out with their exclusive “.int” extension (imf.int, ecb.int, who.int; “.int” domains are restricted to treaty-based organizations), should not your alma-mater also stand out with its “.int” extension and intergovernmental status?

Apart from the institutional aspect, the program documented in this brochure is equally a reflection of this ambitious philosophy: intellectual rigor and openness, excellence in written and oral communication, broad and deep coverage of this vast field of knowledge and practice.

Being accepted in and completing such a program would certainly be a tremendous achievement and an open door to a new realm of possibilities. The question is not simply “Are you qualified?” - it really is: “Are you ready and willing?”

We look forward to this encounter.

Sincerely,

Winston Dookeran

EUCLID Secretary-General

Former Minister of Foreign Affairs and Central Bank Governor

Email: secgen@euclid.int





Overview

The EUCLID DEPI (PhD in Epidemiology and Biostatistics) is a distance-delivered, non-resident degree program offered by EUCLID (Euclid University), an intergovernmental and treaty-based organization serving 12 Participating States globally, and headquartered in Banjul, The Gambia, West Africa.

The goal of the DBIO program is to prepare expert-level professionals for senior-level positions in the vast realm of global health and research with intergovernmental and non-governmental organizations, as well as medical or pharmaceutical institutions.

Program Objectives

This program focuses on the application of theoretical knowledge to real-world public health practice, rather than on the advancement of academic knowledge for its own sake.

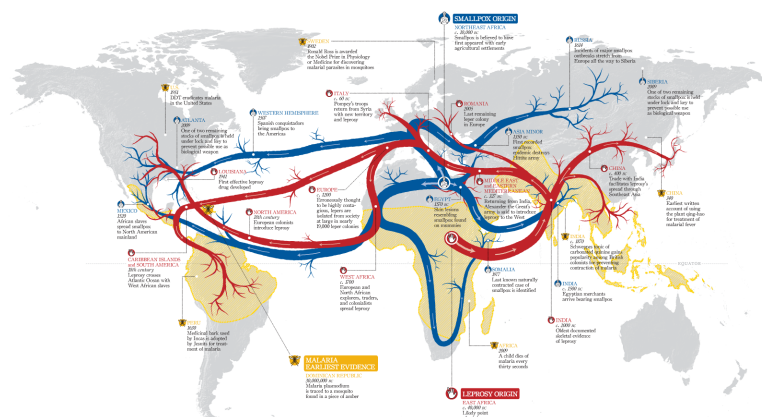
The DEPI was primarily designed to train government staff already working in the field, but it is certainly suitable to prepare other professionals and outstanding students for careers with governmental bodies, NGOs, multinational corporations and international organizations such as the WHO, European Union, the African Union, ECOWAS, etc.

On account of its low tuition and institutional relationships, it is of special interest to European, African and “Small Islands” students.

The EUCLID DEPI is a unique program in the sense that it is the only Doctoral degree program in epidemiology actually offered by an intergovernmental organization chartered to do so, thus allowing direct interaction with practitioners as well as opening rare internship opportunities.

Admission Requirements

Applicants must have a Master’s degree or its



international equivalent (e.g. MPH, MD, MA Bioethics), issued by an institution recognized or accredited by the appropriate public agency.

Government-sponsored applicants (who are already government staff) may be admitted without a qualifying degree if their level of education and experience is deemed sufficient. EUCLID may require these participants to complete bridge courses prior to enrolling in the DEPI.

Fluency in English (spoken and written) is required and will be tested.

Students are expected to be in a position to dedicate 10 to 15 effective hours of study on a weekly basis.

Methodology

This program is offered on an asynchronous and open-enrollment basis with occasional sequencing in cohort groups.

The DEPI is personalized for every student and consists in a sequence of courses (academic modules) which are delivered using the following methods / media formats:

- ♦ Standard textbooks
- ♦ DVD lectures / online videos
- ♦ MP3 podcasts and webcasts
- ♦ Internal EUCLID course packs
- ♦ Moderated conference calls

Typically, a course consists of 7 periods which logically organize and sequence the assigned materials that are studied on an individual basis. Courses assignments include (1) response papers after each study period (2) the composition of academic papers based on the textbooks, (3) the creation of a quiz which should demonstrate the student's grasp of the subject-matter scope and particulars.

Students are often connected in "pairs" or "trios" which allows them to interact and exchange on their coursework while moving along in the program at their own pace.

Each course is capped by an extensive 45-minute long oral examination (typically done using Skype) which allows the supervising instructor to enter the composite final grade.

Overall, this program emphasizes the ability to understand systemic interactions as well as to express logical, respectful and persuasive arguments by means of publishable academic papers. At the same time, respect for the diversity of bioethical, medical and religious values is emphasized.

The ability to write professional, journal-grade papers is one of the essential objectives of this program. All students must complete the program having acquired and demonstrated graduate-level expertise in a specific aspect of epidemiology/biostatistics that will be of lasting interest to academia, government or the private sector.

The curriculum also calls for the ability to present oral reports or lectures (webcasts), delivered to the course tutor in MP3 or WMV format.

Courses:

EUCLID ▲ DEPI Course Sequence:

(including optional courses marked with *):

- International Academic Methods

(ACA-401D) (2 UCH / 1.5 ECTS)

- Argumentation and Critical Thinking*

(TPH-499) (2 UCH / 3 ECTS)

IPH-EPI1—Epidemiology I

IPH-EPI2—Epidemiology II/2

IPH-STAT—Biostatistics

IPH-RCT—Interpreting Randomized Clinical Trials

IPH-EPI3—Fraud in Epidemiology and Clinical Trials

BIOETH-CLI—Clinical Bioethics *

IPH-MEPI1—Managerial Epidemiology 1

IPH-MEPI2—Managerial Epidemiology 2

- Dissertation (5 modules)

(IPH-THESIS) (25 UCH / 50 ECTS)

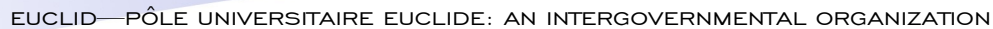
Each course is fully documented by means of a detailed syllabus (program syllabi are always available online with full documentation of academic coursework).

Dissertation:

In consultation with his or her assigned advisor, the student will write a doctoral thesis making a contribution to the field of bioethics, which has a standard value of 25 USCH. The following areas of research and concentration are our focus:

- Clinical bioethics





-
- The diagram illustrates the interconnected nature of the global health ecosystem. At the center are five main stakeholder groups: Health Ministries, Healthcare Providers, Consumers, Global Organizations, and Others. These groups are linked to a wide array of specific entities and services. For example, Health Ministries are connected to Research Centers, Universities, NGOs, CDC, WHO, and various data services like AIDS, HIV, TB, Malaria, and SARS. Healthcare Providers are linked to Hospitals, Clinics, and other medical facilities. Consumers are connected to Individuals, Consumer Orgs, and other groups. Global Organizations are linked to CDC, WHO, and various data services. The diagram also shows a network of smaller nodes representing specific entities and services, such as Research Centers, Universities, NGOs, CDC, WHO, AIDS Data, HIV Data, TB Data, Malaria Data, SARS Data, Quarantine Services, Search Services, Security Services, EPR Info Services, Vaccination Services, Disease Surveillance, Healthcare Data, Hospital, Clinic, Others, Individuals, Consumer Orgs, Others, Local, Global, Regional, Research Centers, Universities, NGOs, CDC, WHO, Others.



Language Requirements

All students must be fluent in English and should consider becoming conversant in French, Spanish, Arabic, Chinese or another major world language in addition to English.

How to apply

All interested students must apply online at www.euclid.int

Government-sponsored applicants may apply online in the same manner as the general public, but they should also contact their National Point of Contact to secure formal endorsement.

The EUCLID Admissions Officer will send to all applicants an updated version of the “Admissions Checklist” which explains the required documentation to provide and the steps to be followed.

It must be emphasized that completing a distance study program at EUCLID requires determination and persistence. This same trait is expected in applicants who should not expect to be pursued by the Admissions team but rather actively pursue enrollment at EUCLID.

Summary and Outcome

It is fair to say that EUCLID’s programs are better described as ‘distance’ rather than ‘online’ study programs. This means that students do not have to connect at a particular day and time to participate in bulletin board discussions as is often the case with ‘online’ programs.

Rather, our programs emphasize the ability to absorb

a vast amount of material on a personal basis, which makes them suitable for fast readers who on their own have a record of intense book reading and passionate interest in their field of study.

EUCLID evaluates the applicant’ interpersonal and teamwork skills—which are essential for personal and professional success—on the basis of prior experience confirmed by means of an extensive personal interview. Because EUCLID was established to serve active diplomats and other government officials, it is expected that these professional skills will have been acquired and demonstrated in the course of the applicant’s career.

In some cases, EUCLID may propose specific courses (which may not even be listed as electives) in order to bring inter-personal skills (including public speaking) to executive level.

Upon completion of the program, every student is expected to have become a subject-matter expert in a practical diplomacy.

Students planning to continue their studies with a doctorate should request the full master’s thesis option which extends the credit requirement for the MDIA.

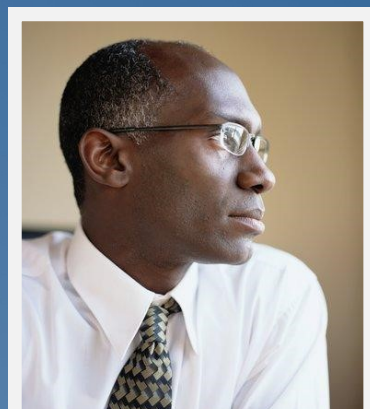




Photo: A senior EUCLID official assessing educational satisfaction during an official visit at a EUCLID Participating State Ministry of Foreign Affairs.

Faculty Profiles

FACULTY COMMITMENT

EUCLID has secured an outstanding and *truly global faculty roster*, which however limits the amount of available slots for students.

All our faculty members are dedicated to staying in touch with their assigned students and to provide not only timely but also quality responses and feedback throughout the course work process.

DOCTORAL BACKGROUNDS

More than 70% of EUCLID faculty members hold doctorates from internationally recognized institutions, including:

- ♦ Oxford University (UK)
- ♦ University of Malta
- ♦ University of Zurich
- ♦ Harvard University (USA)
- ♦ London School of Economics (LSE)
- ♦ University of Grenoble (France)
- ♦ INSEAD Paris (France)

FACULTY HIGHLIGHTS

Prof Dr Ernst von Schwarz, MD, PhD, FESC, FACC, FSCAI is a US based world renowned triple board certified clinical and academic cardiologist and clinical professor of medicine at UCLA. He joined Cedars Sinai Medical Center and UCLA as Professor of Medicine and Director of the Cardiac Device Program in 2006. Dr. Ernst von Schwarz has published over 150 scien-



tific papers in international peer reviewed medical journals as well as several books and book chapters in cardiovascular medicine and ethics.

Prof Dr Luchuo Bain holds a Master of Science (MSc), Bioethics (Research and Clinical/Medical Ethics) from KU Leuven and from Vrije Universiteit Amsterdam (VU Amsterdam) a Doctor of Philosophy in Transdisciplinary Global Health Solutions. He writes:

I am a public health (Global health) professional and a specialist in empirical research methods in bioethics (Clinical and Research Ethics). I have a keen interest in Sexual and Reproductive Health and Rights, Health systems strengthening for low and medium income countries, Clinical (Trials) Research, infectious disease control, human resources for health management, and monitoring and evaluation of public health interventions. I am an advocate for the materialization of the health rights agenda as a fundamental human right, and the utilization of innovative, flexible, evidence based, cost effective and sustainable initiatives in rendering health systems in the global south more resilient and responsive to their context specific challenges. I am particularly interested in academic/medical writing, medical content editing, and fully engaged in pushing forward the "science made open access" agenda. I believe in using in depth inter-transdisciplinary systems thinking approaches to provide simple answers to complex problems. As a high performing team builder and coach (academic, life and professional), my analytical and innovative skills value lean methodologies in providing meaningful, timely, and sustainable solutions to health related questions.

For a current listing of faculty profiles with full biographies, please visit www.euclid.int under Academics > Faculty Profiles

Frequently-Asked Questions



Are scholarships and financial aid available?

Yes, for developing country students. Applicants residing in a non-OECD country should seek information by contacting our Admissions Office or by visiting our 'Scholarships' webpage. EUCLID does not accept US Title IV financial aid.

Does the distance format provide the same quality of education offered on a traditional campus?

Yes. The dropout rate is higher with distance education because working professionals do not always realize that finding 10-15 dedicated hours of intense studying every week is a serious challenge. In terms of quality however, numerous studies have proven that distance learners perform as well or better than their on-campus counterparts. A research study (*The No Significant Difference Phenomenon* by Thomas L. Russell) cites 355 research reports, papers, and summaries showing no significant difference between distance learning and in-class learning. Where a difference was identified, it generally favored the distance-learning student.

Will my diploma say "Online" degree?

No. Graduates receive the official, traditional diploma which is bilingual French / English.

Is EUCLID accredited and recognized?

Yes, EUCLID is recognized and accredited under international law, as is confirmed by the letter of the United Nations Secretariat (0218/RCA/MP/ONU-12, dated 10 December 2012) and is verifiable from the UNESCO/IAU WHED system as well as other official resources.

How long will the program last?

The program consists of a series of courses of variable credit-value and therefore duration. The computer system will assign a target date and deadline based on the course credit value.

Effective and dedicated part-time students have

been able to complete their coursework within 18–24 months of beginning the program.

Do you accept transfer credits or grant credits based on work experience and certifications?

Yes. EUCLID may, on a case-by-case basis, assess transfer credit up to a maximum of twelve credits. While the majority of our students have years of work experience, this cannot be used as a substitute for coursework.

How much does the program cost?

Please visit the EUCLID website at www.euclid.int for an explanation of the tuition and fees for this program. You may also contact our Admissions Officer for further information regarding cost and applicable financial aid / scholarships.

Where is EUCLID located?

EUCLID has its headquarters in Bangui and Banjul, as well as liaison offices around the world. EUCLID France is located in Montpellier.

Will I need to travel to Washington DC, Bangui, Brussels or Banjul, etc.?

No. This program does not have a residency requirement.

Do I need an Internet connection to qualify?

Yes. All students must have easy and regular access to a high-speed connection, which means fast enough to conduct an international phone call / web-conference using Skype.

When can I begin the program?

Enrollment is continuous and students may typically start 2-3 weeks after being accepted.

Official Headquarters (“Francophonie”)
Avenue de France (Campus ENAM) / BP 157
Bangui
Central African Republic
Tel.: +236 21 61 52 80 | 72 04 55 02

Official Headquarters (ECOWAS)
Brusubi Phase 2 | Street Adjacent Brusubi Police Station
50 Meters Off Road
West Coast Region, Brusubi
The Gambia
Tel: (+220) 6645597 / 3773464 / 9995597
Email: registrar@euclid.int

US Liaison Office to the Permanent Missions (USA)
EUCLID / Euclid Global Institute
1101 30th Street NW Suite #500
Washington, DC 20007, USA
Tel.: +1 202 263-3628

Office of the Institutional High Steward (Dr. Juan C. Avila)
Permanent Mission of the Dominican Republic to the United Nations
144 East 44th Street, 4th Floor, New York, NY 10017
New York, NY 10017, USA
Tel.: +1 212-867-0833

Pôle Euclide France
450 Rue Baden Powell
Montpellier
France

Official Web Sites:

www.euclid.int (Institutional)
m.euclid.int (Mobile)

For Admissions questions, please contact:
admissions@euclid.int



EUCLID
int

AN INTERGOVERNMENTAL INSTITUTION
UNDER UNITED NATIONS TREATY SERIES 49006/49007

Euclid University | Pôle Universitaire Euclide | www.euclid.int